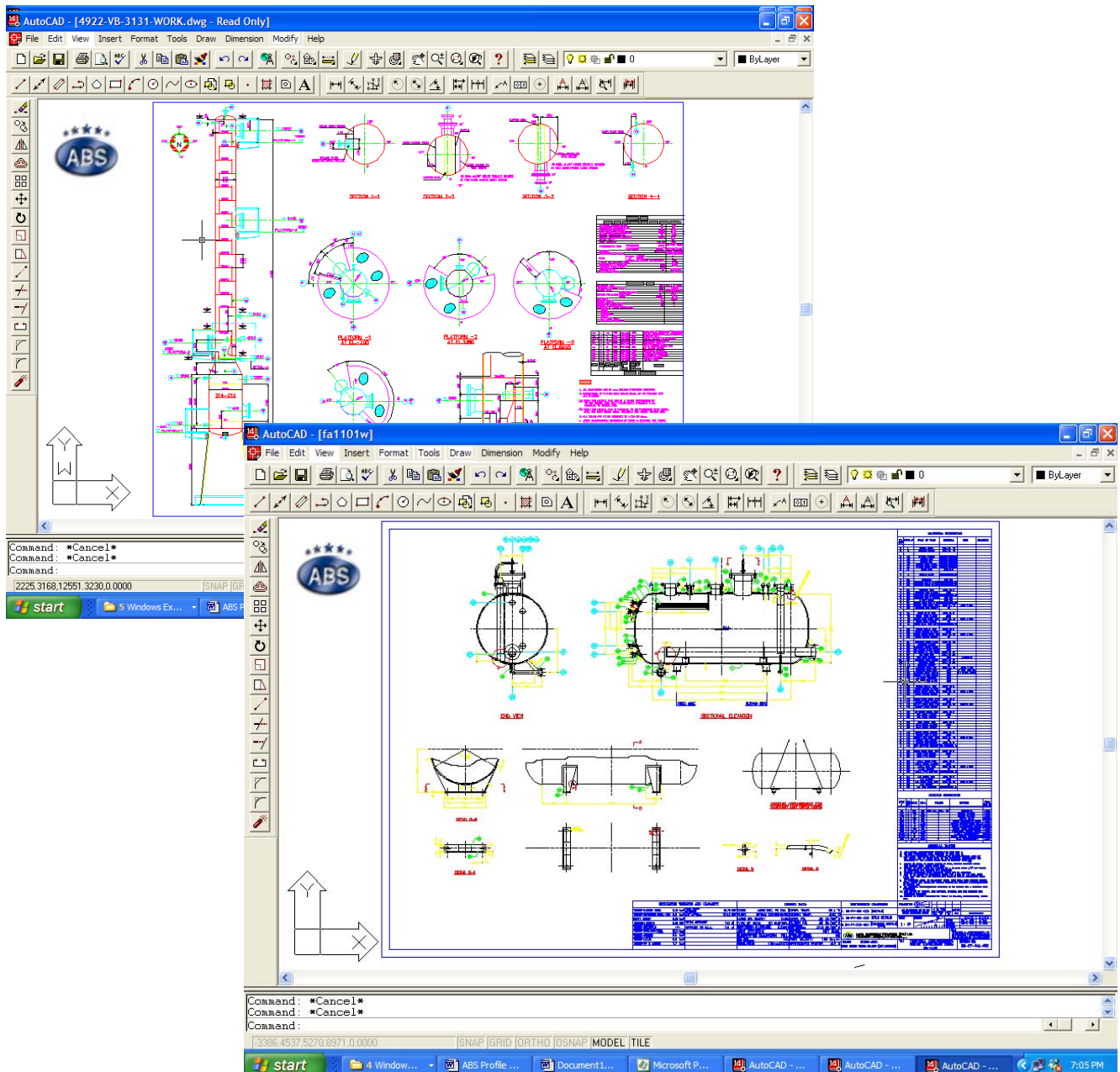


CAPABILITIES

ENGINEERING

DESIGNING AND DRAWINGS DEVELOPMENT (DRAWING OFFICE):

- In order to provide strong back up to our fabrication facilities, in-house arrangement is available for code calculations, designing and drafting of Engineering and shop drawings. These facilities are further strengthened by the support of our associated mechanical, electrical and instrumentation designers and consultants.



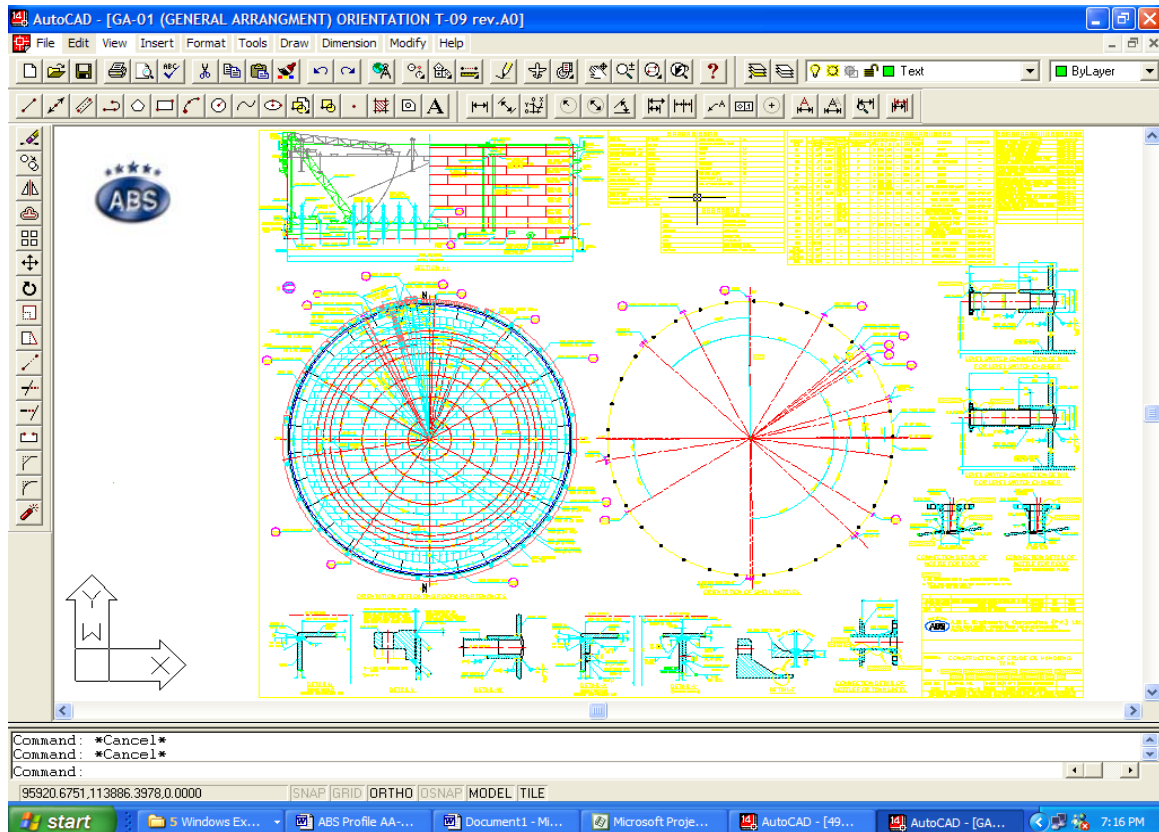
- Furthermore ABS has many close associations with internationally renowned Licensers, Designer, Technology providers, etc., for development and offering complete plants on turn key basis.



CAPABILITIES

ENGINEERING

- Our drawing office is headed by qualified and experienced engineers and supported by computer-aided designing and drafting facilities. Detailed designing is carried out in accordance with data sheets provided by the clients.



- All shop drawing, and cutting plans are prepared on AutoCAD. For that purpose ABS has permanent in-house availability of 20,000 drafting hours per year and further could be arranged, if and when required basis.
- Upon receipt of order, all design calculations; client's specification, drawings, etc. are reviewed by drawing office, for compliance and adequacy in accordance with applicable codes and standards. We have developed our computerized calculation programs for the code calculations and detailed designing.

DRAWING AND DRAFTING EQUIPMENT:

Computers	=	10 Nos.
AO Size Plotter	=	1 No.
A4 Size Printer	=	3 No.
Digital Camera	=	1 No.
Scanner	=	1 No.



CAPABILITIES

ENGINEERING

DESIGN CODES IN EXPERIENCE:

- Pressure Vessels ASME Sec. VIII Div. 1 & 2, BS 5500, AD Merkblatt and CODAP.
- Heat Exchangers TEMA – R/C/B, ASME Sec. VIII Div. 1 & CODAP.
- Chemical Plant & Petroleum Refinery Piping ASME / ANSI B 31.3
- Liquid Transmission / Distribution Piping ASME / ANSI B 31.4 BS 8010 & API 1104.
- Storage Tanks API 650 and CODAP
- Air Heaters API 661
- Structural Steel Designing AISC, BS 5950, BS 4360, BS 729 & AWS D 1.1
- For Material Selection
 - ASME Sec. II Parts A,B,C & D
 - JIS (Ferrous & Non Ferrous Metal)
 - DIN (Material Specifications)
 - API Specification 5L
- Welding ASME Sec IX
AWS D 1.1
- Surface Preparation SSPC
Swedish Standard “SIS 05-5900”
- Cathodic Protection NACE
- NDT Procedures ASME Sec. V